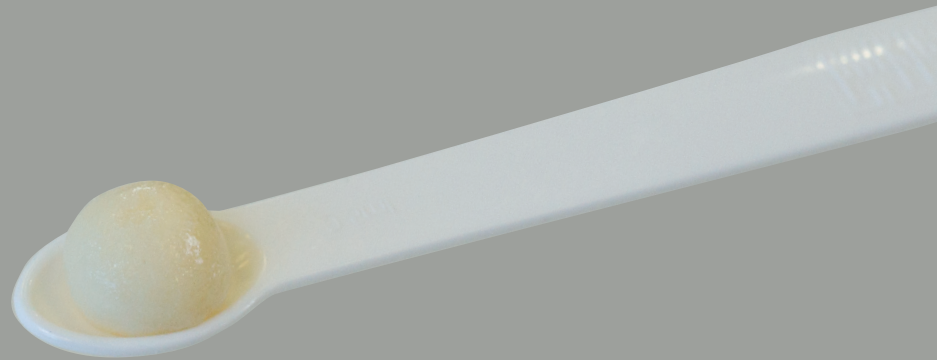


ALLOGRAFT C+TBA+HyA – STICKY BONE

Allograft C+TBA+HyA consists of 60% allogenic bone granules and 40% sodium hyaluronate powder (HyA). By adding WFI or 0.9% NaCl solution, the sodium hyaluronate gets pasty properties and connects the bone particles. The allogenic bone granules are easier to handle in the paste and stay in situ after application.

Allograft C+TBA+HyA

Origin:	Human
Tissue:	100% allogenic bone
Processing:	Allotec® purification procedure
Inactivation:	Min. SAL10 ⁶ for viruses and bacteria
Sterilisation:	Gamma irradiation
Application:	Bone void filler
Rehydration:	Mixing with liquid



ORDER INFORMATION

DESCRIPTION	GRAIN SIZE [mm]	ITEM NUMBER	VOLUME [cc/ml]
Cancellous Granules 0,25-1 mm (S) + HyA	0,25 - 1	ALO535	1,0
		ALO536	2,0
		ALO537	5,0
		ALO538	10,0
Cortico-cancellous Granules 0,25-1 mm (S) + HyA	0,25 - 1	ALO530	1,0
		ALO531	2,0
		ALO532	5,0
		ALO533	10,0
Granules <0,25 mm (XS) + HyA	< 0,25	ALO540	1,0
		ALO541	2,0
		ALO542	5,0
		ALO543	10,0

